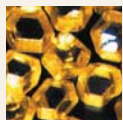




You need precision, you want morphology

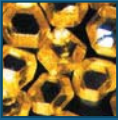


# OCCHIO Flow-Cell FC200M

The best solution for measuring particles in suspensions

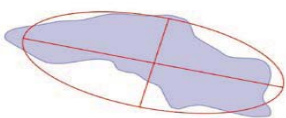
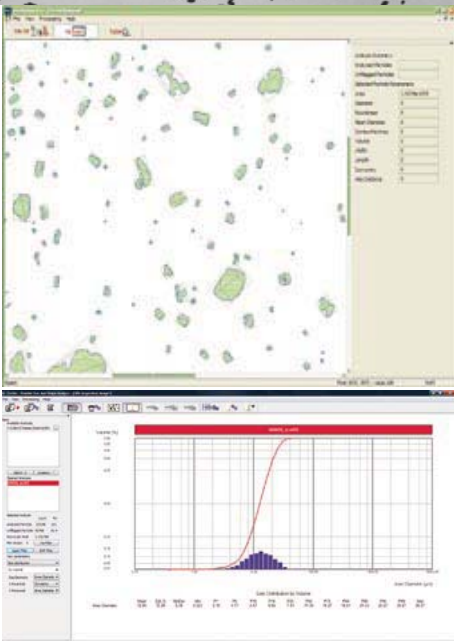
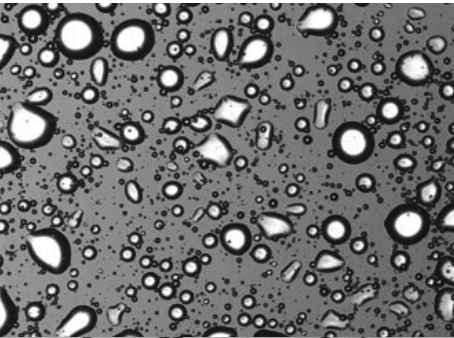
Imaging solutions in particle analysis

[www.occhio.be](http://www.occhio.be)



OCCHIO Flow-Cell FC200M

## Size , shape & counting for particles in suspensions



Through the efforts of an international and multidisciplinary team of engineers, **OCCHIO** offers you a complete range of solutions, starting from 200 nanometers and ranging up to centimeters.

Whether it is for laboratory instrumentation, «at line» or even «on line» solutions, **OCCHIO** is prepared to be your partner in high-level powder characterization. **OCCHIO** and **OCCHIO Flow-Cell** bring you accuracy, profit and innovation.

### \_ Accuracy

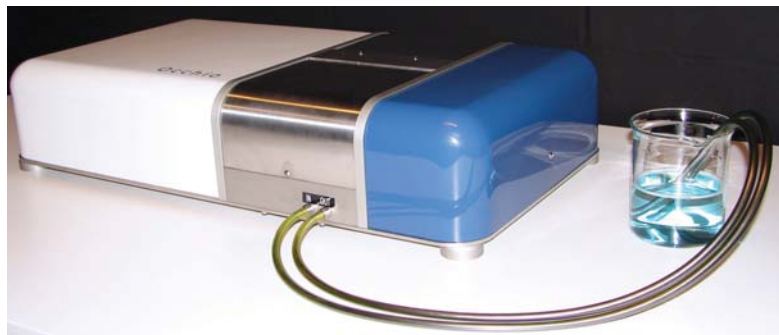
With its proprietary Light and high quality lens, **OCCHIO Flow-Cell** will change your own perception of image analysis, measuring suspensions or emulsions which are invisible under normal microscopy.

### \_ Profit

**OCCHIO FC200 M** is an automatic device dedicated to suspensions quality characterization. Based on image analysis technique associated with a specific pump to avoid breakage of particles, FC200M provides size, shape and counting measurements.

### \_ Innovation

Morphology measurement is more than shape description. To improve, you need robust and significant measurement. Based on decades of university research, the **OCCHIO Flow-Cell** provides your R&D and Production departments with dedicated parameters, specially engineered



### \_ Size measurements (from 400 nm up to 1000 µm)

Area diameter - Mean diameter - Length - Width - Maximum distance ....

### \_ Shape parameters

Elongation - Circularity - Convexity - Shape factor - Luminance & Special parameters.....

### \_ Counting and kinetics...

**For more information contact us**

[info@occhio.be](mailto:info@occhio.be) [www.occhio.be](http://www.occhio.be)